

**DOCUMENT 00 90 00**  
**ADDENDUM**

**ADDENDUM No.:** 2

**DATE:** November 2, 2023

**RE:** WESTERN TECHNICAL COLLEGE  
TOMAH – INDUSTRIAL LAB RENOVATION  
200 EASH MILWAUKEE ST  
TOMAH, WI 54660  
PROJECT NO. 23047

**FROM:** HSR Associates, Inc  
100 Milwaukee Street  
La Crosse, WI 54603  
(608) 784-1830

**TO:** Prospective Bidders

---

This addendum forms a part of the Contract Documents and modifies the original Bidding Documents dated October 2023. Acknowledge receipt of this Addendum in the space provided on the bid form. Failure to do so may subject the Bidder to disqualification.

This Addendum consists of: 1 page, 0 documents, 0 sections, and 1 drawing.

---

**CHANGES TO GENERAL REQUIREMENTS:**

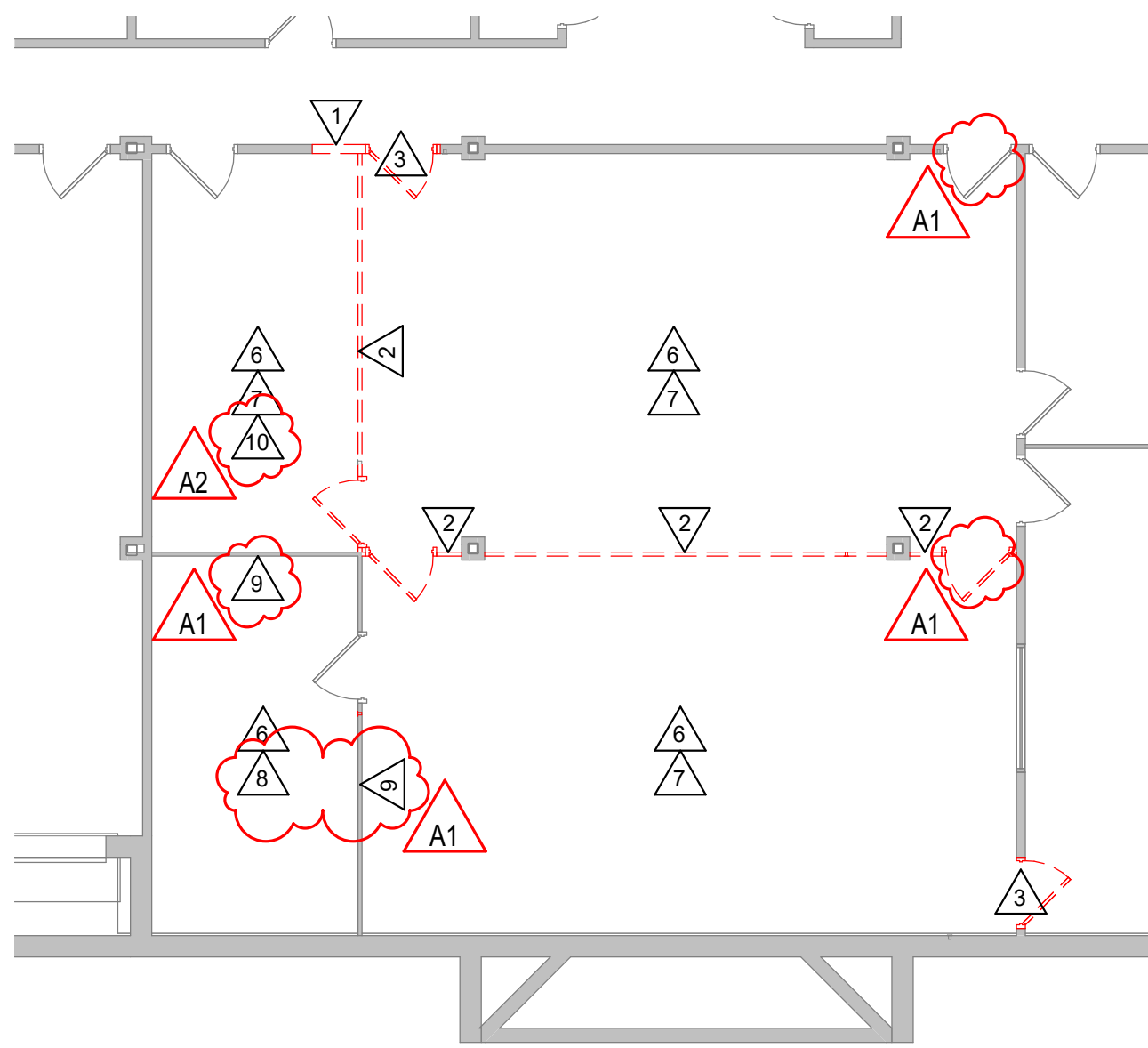
1. Section 09 67 00 Fluid-Applied Flooring
  - a. See the narrative, immediately below, describing revisions to the section.
  - b. Add new subparagraph 2.02 A.6.d. stating "Manufacturer: Terrazzo & Marble Supply, system to match the requirements of the specification.

**CHANGES TO DRAWINGS**

2. Sheet A100 DEMO PLAN, REMODEL PLAN, RCP 30"x42"
  - a. See the revised sheet included in this addendum. Disregard the previous version.
  - b. 1/A100: See clouded changes for keynote 10 added.
  - c. KEY NOTE REMOVAL: See clouded changes adding keynote 10.

**END OF DOCUMENT 00 90 00**

Page Intentionally Left Blank



1 BASEMENT DEMO PLAN  
1/8" = 1'-0"

REMOVAL GENERAL NOTES:

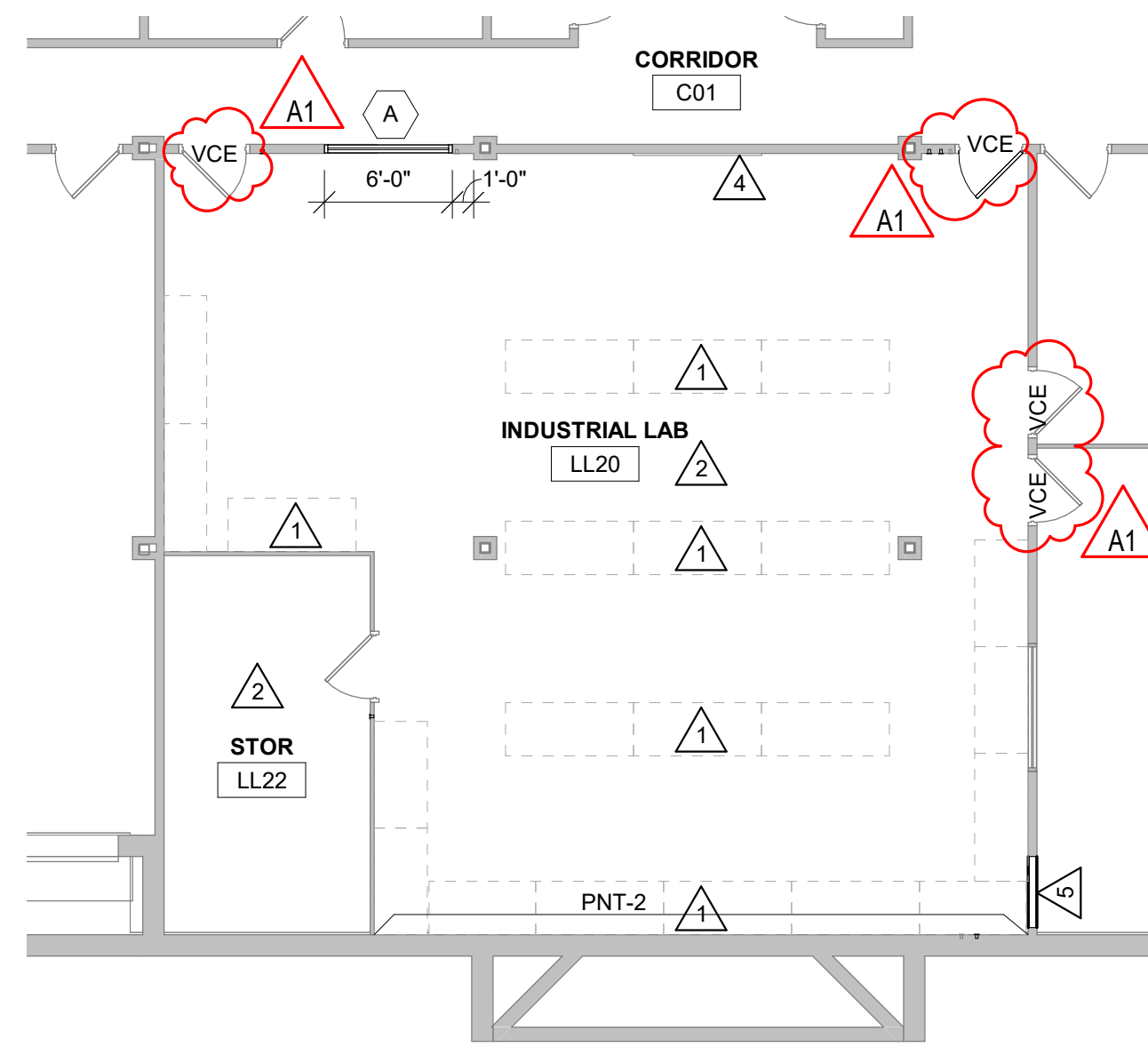
- A. ALL ITEMS SHOWN DASHED ON DEMOLITION PLANS SHALL BE REMOVED FROM THE SITE UNLESS OTHERWISE NOTED. REFERENCE MEP DRAWINGS FOR APPLICABLE EQUIPMENT REMOVALS AND MODIFICATIONS. COORDINATE PATCHING AT EQUIPMENT REMOVALS.
- B. AT WALL TYPES/MATERIALS: PREPARATION FOR NEW FINISHES SHALL INCLUDE, BUT NOT BE LIMITED TO REMOVAL OF EXISTING FINISHES, TAPES, GUMMASTIC, WALLS AND RELATED ITEMS. PATCHING OF HOLES, INDENTATIONS AND CRACKS FOR AN ACCEPTABLE SURFACE FOR NEW FINISH INSTALLATION. GC TO REMOVE ALL WALL FASTENERS FROM PREVIOUS FIXED FURNITURE AND EQUIPMENT AND THOSE CURRENTLY BEING REMOVED.
- C. OWNER WILL REMOVE LOOSE FURNISHINGS AND EQUIPMENT FROM THE WORK AREA PRIOR TO START OF CONSTRUCTION.
- D. MAINTAIN ALL EXIT DOORS AND CORRIDORS IN UNOBSTRUCTED OPERABLE CONDITION WITH SAFE PASSAGE AWAY FROM THE BUILDING.
- E. ROOM NUMBERS ARE SHOWN ON THIS PLAN FOR INFORMATIONAL AND COORDINATION PURPOSES ONLY.
- F. COORDINATE STORAGE LOCATIONS FOR SALVAGED ITEMS WITH OWNER.
- G. PROVIDE FLOOR PROTECTION AS SPECIFIED AT DEBRIS REMOVAL PATHS THROUGH BUILDING.

REMOVAL PLAN LEGEND:

- △ SYMBOL INDICATES CONSTRUCTION NOTE THIS SHEET
- REMOVE ITEMS NOTED WITH DASHED LINES
- SYMBOL INDICATES REMOVAL OF DOOR AND FRAME UNLESS NOTED OTHERWISE

KEY NOTES REMOVAL

- 1 CUT AND DEMO PORTION OF EXISTING STUD WALL AS REQUIRED FOR NEW WINDOW
- 2 REMOVE DEMOUNTABLE PARTITION AND ASSOCIATED DOORS, WINDOWS, ACCESSORIES
- 3 REMOVE EXISTING DOOR AND FRAME
- 4 NOT USED
- 5 NOT USED
- 6 REMOVE EXISTING CEILING TILES - EXISTING CEILING GRID LIGHTS, AND CHANGES TO REMAIN
- 7 REMOVE EXISTING CPT FLOORING
- 8 REMOVE EXISTING VCT FLOORING
- 9 REMOVE DEMOUNTABLE PARTITION AND ASSOCIATED DOORS, WINDOWS, ACCESSORIES FOR BOLD APPLIED FLOORING
- 10 REMOVE EXISTING FURNITURE



2 BASEMENT FLOOR PLAN  
1/8" = 1'-0"

PLAN GENERAL NOTES:

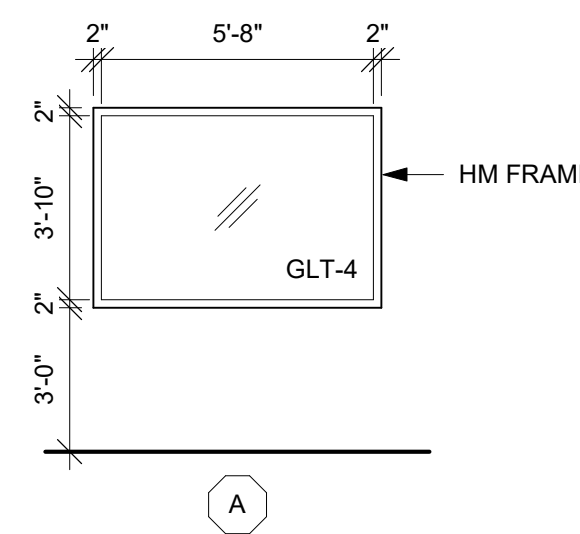
- A. REFER TO LIFE SAFETY PLANS FOR FIRE RATING LOCATIONS AND ACCESSIBILITY ROUTES.
- B. LOOSE FURNISHINGS EXCEPT AS NOTED SHALL BE PROVIDED AND INSTALLED BY THE OWNER.
- C. FIXED EQUIPMENT IS SHOWN ON THIS PLAN FOR COORDINATION.
- D. VERIFY EXACT SIZE AND LOCATION OF ALL MECHANICAL / PLUMB AND ELEC. OPENINGS - GENERAL CONTRACTOR SHALL BE RESPONSIBLE FOR FINISH AT ALL VISIBLE AREAS. ALL OPENING SHALL BE SEALED AFTER UTILITY INSTALLATION.

PLAN LEGEND:

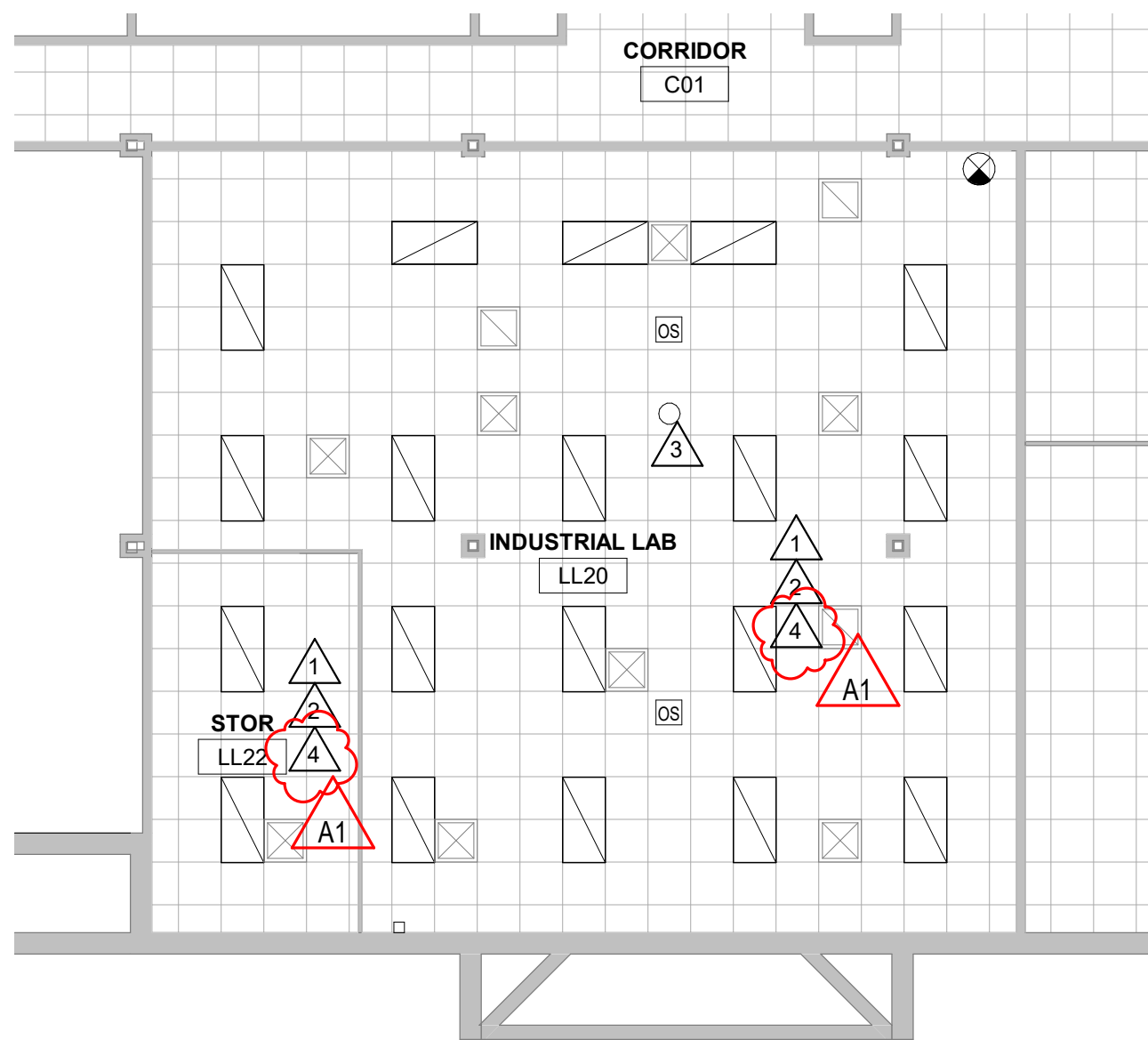
- △ SYMBOL INDICATES CONSTRUCTION NOTE THIS SHEET

KEY NOTES PLAN

- 1 EQUIPMENT AND FURNITURE BY OWNER
- 2 PAINT AND CPT FINISHED WALLS PNT-1, ACCENT AS NOTED ON PLANS
- 3 NOT USED
- 4 MARKER BOARD - OFOI
- 5 TRAIL OPENING TO MATCH EXISTING ADJ. CONSTRUCTION AND MATERIALS



4 WDO ELEV  
1/4" = 1'-0"



3 BASEMENT RCP  
1/8" = 1'-0"

RCP GENERAL NOTES:

- A. SEE ELECTRICAL FOR LIGHTING TYPES.
- B. ALL REMAINING ANNULAR SPACE AROUND ITEMS PENETRATING WALLS SHALL BE NEATLY SEALED.
- C. CONFIRM EXACT LOCATION OF OVERHEAD PROJECTORS AND OTHER CEILING MOUNTED EQUIPMENT WITH OWNER / MANUFACTURER PRIOR TO INSTALLATION. SEE EQUIPMENT PLANS FOR ADDITIONAL EQUIPMENT.
- D. CEILING TYPES INSTALLED AS NOTED ON PLANS. SEE SPECIFICATIONS FOR ADDITIONAL SYSTEM INFORMATION.
- E. PREP ALL ITEMS ABOVE CEILING GRID FOR PAINT, INCLUDING BUT NOT LIMITED TO REMOVING DRYWALL MUD OVERSPRAY AND DELETERIOUS OIL COATINGS FROM DUCTS. DRYWALL MUD MAY REMAIN IN PLACE ON STRUCTURE. MARK ITEMS CONFIRMED BY A/E TO NOT RECEIVE PAINT. PERFORM PAINT ADHESION TESTING ON REPRESENTATIVE SURFACES PRIOR TO PAINT.

RCP LEGEND:

- LIGHT FIXTURE - SEE ELECTRICAL
- ⊗ SUPPLY - SEE MECHANICAL
- RETURN - SEE MECHANICAL

KEY NOTES RCP

- 1 EXISTING GRID WITHOUT CEILING TILES AT 8'-0"
- 2 PAINT WALLS, STRUCTURE, DUCTS, CONDUIT, ETC ABOVE CEILING GRID PNT-2. DO NOT PAINT ELECTRICAL HEAT EXCHANGE SURFACES, OR CEILING GRID. AE/OWNER APPROVAL OF MASKED ITEMS PRIOR TO PAINTING.
- 3 PROVIDE DECK SUPPORTED, STRUT-FRAMED, GROSS-BRACE, SUPPORT WITH HORIZONTAL PLYWOOD PANEL JUST ABOVE GRID ELEVATION FOR OWNERS USE TO MOUNT ANY EQUIPMENT. COORDINATE WITH OWNER REGARDING CONFIGURATION AND LOCATION.
- 4 MODIFY EXISTING SPRINKLER SYSTEM FOR OPEN GRID CEILING



Project Name: WTC Tomah - Industrial...

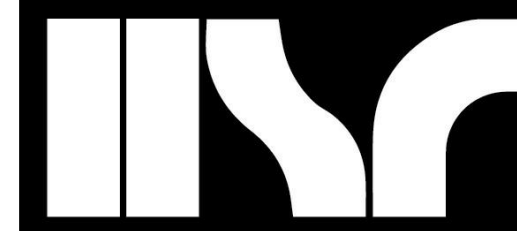
Color Schedule

HSR Project Number: 23047

MASTER COLOR SCHEDULE

MANUFACTURER / COLOR	GENERAL LOCATION	REMARKS
09 65 00 RESILIENT FLOORING/BASE		
VWB-1 (Vinyl Wall Base)	Manufacturer: Tarkett Size: 4 inches Color: Clay	Field Comparable... by Prior Approval
09 67 00 FLUID APPLIED FLOORING		
FAF-1 (Fluid Applied Flooring)	Manufacturer: Sherwin Williams - River Rock Color:	Field Comparable... by Prior Approval
09 90 00 PAINTS AND COATINGS		
PNT-1 (Paint)	Manufacturer: Sherwin Williams Color: Accessible Beige Color Code: 249-C1; SW 7036	Field Comparable... by Prior Approval
PNT-2	Manufacturer: Sherwin Williams Color: Moth Wing Color Code: 249-C4; SW 9174	Accent & Ceiling Comparable... by Prior Approval

ARCHITECTURE  
ENGINEERING  
INTERIOR DESIGN



HSR ASSOCIATES INC.  
100 MILWAUKEE STREET  
LA CROSSE, WISCONSIN  
PHONE: 608.784.1830  
FAX: 608.782.5844  
www.hsrassociates.com

Consultant:

WESTERN TECHNICAL COLLEGE  
TOMAH - INDUSTRIAL LABS

Project Location: 120 EAST MILWAUKEE STREET  
TOMAH, WI 54660

DEMO PLAN, REMODEL PLAN, RCP

Project Title:

HSR Project Number: 23047

Project Date: OCT 2023

Drawn By: AF

Key Plan:

No.	Description	Date
A1	Addendum #1	10/30/2023
A2	Addendum #2	11/2/2023

Graphic Scale: 0' 2' 4' 8' 12'

Last Update: 11/1/2023 4:06:49 PM

A100